

The Cloverleaf

October, 2008



Clovers To:

Our 4-H Summer Camp Counselors:

Jon Thomas Chargois, Taylor Chargois, Sabrina Gould, Kristin Davis, Gareth Berry, Hannah Vincent, Jenna Zaunbrecher

Our 4-H Summer Camp Adult Leaders:

Sharon Nabours and Gail Toups



Claire Galley Voted State 4-H President

4-H University is a statewide event for 4-Hers ages 13 and over. One of the things 4-Hers do at 4-H U is elect officers for Louisiana 4-H. Calcasieu Parish is proud to have 3 members serving on the state Executive Board this year! Claire Galley from Sulphur High School was elected President of Louisiana 4-H. Taylor Chargois (Calcasieu Home School Club) and Brandon Guillory (Iowa Sr. Club) were elected to serve on the Executive Board this year as Southwest Regional Representatives. In addition, we're proud to have Jenna Zaunbrecher (Bell City) serving on the state Fashion Board, Kristin Davis (Calcasieu Home School) and Jeanne Thibodeaux (Sulphur Sr.) on the Food and Fitness Board, and Cameron Durham (Calcasieu Home School) will be representing us on the State Science, Engineering and Technology Board.

Louisiana 4-H is 100 Years and Counting....

That's right! With the 2008 - 2009 year, 4-H in Louisiana begins our 2nd century of working with the youth of our state. And if you think that 4-H is mainly cows and cooking, have we got a surprise for you! We have a year's worth of fun and educational opportunities for you.

What are some fun things you can do in 4-H? Well, the first place to look to find out about what's going on in 4-H is The Cloverleaf you'll receive at your monthly meeting. Take it home to let your family know which events interest you. Information about 4-H activities - newsletters, calendars, forms, etc. - can also be found on our web site. Go to <http://lsuagcenter.com> and click on Parish Offices to get to our web site.

Officer Training Helps Club Officers Get A Good Start On The Year

Good officers are the key to an active and successful 4-H club. Have you been chosen to serve as an officer for your local club? If so, you have an important job to do for your club members. Our Officer Training Workshop is your chance to learn exactly what your responsibilities as a club officer are and how to best carry out those responsibilities. Our parish Officer Training Workshop will be held on **October 13**, from **4:30 p.m. to 5:30 p.m.** at the 4-H Office on Gulf Hwy. We hope to see all club officers on October 13th.



Elementary Project Workshop Day

Elementary Project Workshop Day is a great way to start off the 4-H year! Participants will take part in "hands-on" workshops that relate to the 4th & 5th grade projects. This year Elementary Project Workshop Day will be held on Saturday, **November 15th** from **8:30 a.m. to 12:30 p.m.** at Gayle Hall on the McNeese campus. There will be seven

workshops for you to choose from — Electricity, Pet Care, Clothing, Foods, Puppetry, Outdoor Adventures, Wildlife and Health. You may choose three (3) workshops to attend. We will attempt to give everyone their first three choices, but, because we can only work with so many at one time, we may have to place you in another workshop. **To participate you must pre-register by November 7 by completing and returning the form at the end of the Cloverleaf.**

Parents are also welcome at Workshop Day. Our parents' workshop will give parents information on how you can help your child succeed in 4-H.



Cooperative Extension Service, Calcasieu Parish

7101 Gulf Hwy., Lake Charles, LA 70607

(337) 475-8812; (337) 475-8815 (fax)

www.lsuagcenter.com

Nancy Cronan, Extension Agent, 4-H, NCronan@agcenter.lsu.edu

Jimmy Meaux, County Agent, 4-H, JMeaux@agcenter.lsu.edu

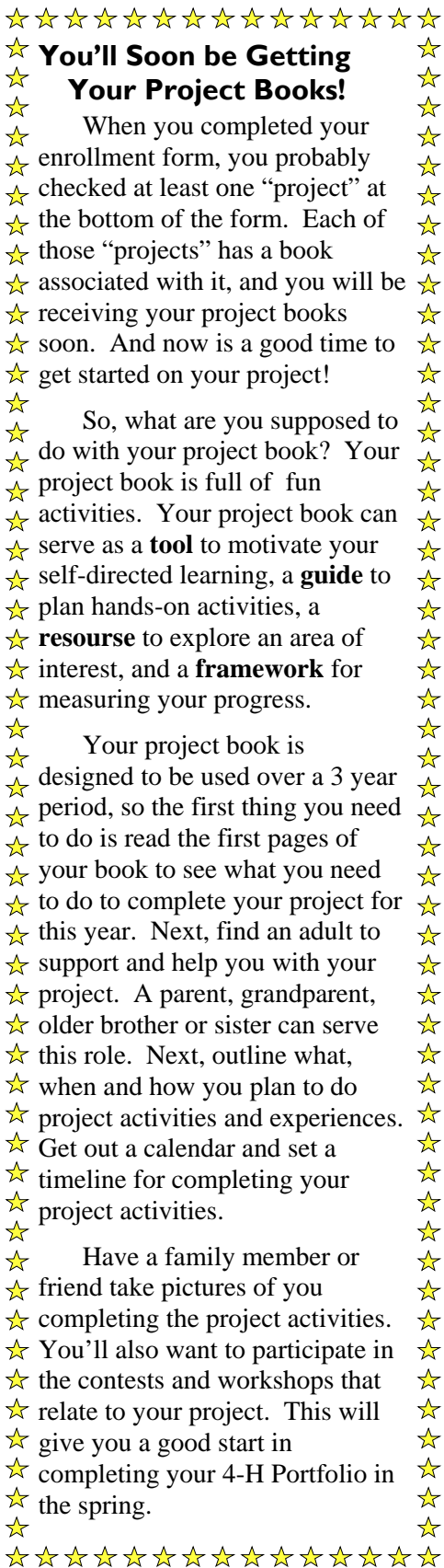
Helen Page, Extension Agent, 4-H, HPage@agcenter.lsu.edu

Trent Guidry, County Agent, 4-H, Tguidry@agcenter.lsu.edu

The LSU Agricultural Center is a statewide campus of the LSU System and provides equal opportunities in programs and employment. Louisiana State University and A & M College. Louisiana parish governing bodies, Southern University, and United States Department of Agriculture cooperating.

It is the policy of the Louisiana Cooperative Extension Service that no person shall be subjected to discrimination on the grounds of race, color, national origin, gender, religion, age, or disability.





You'll Soon be Getting Your Project Books!

When you completed your enrollment form, you probably checked at least one "project" at the bottom of the form. Each of those "projects" has a book associated with it, and you will be receiving your project books soon. And now is a good time to get started on your project!

So, what are you supposed to do with your project book? Your project book is full of fun activities. Your project book can serve as a **tool** to motivate your self-directed learning, a **guide** to plan hands-on activities, a **resource** to explore an area of interest, and a **framework** for measuring your progress.

Your project book is designed to be used over a 3 year period, so the first thing you need to do is read the first pages of your book to see what you need to do to complete your project for this year. Next, find an adult to support and help you with your project. A parent, grandparent, older brother or sister can serve this role. Next, outline what, when and how you plan to do project activities and experiences. Get out a calendar and set a timeline for completing your project activities.

Have a family member or friend take pictures of you completing the project activities. You'll also want to participate in the contests and workshops that relate to your project. This will give you a good start in completing your 4-H Portfolio in the spring.

Project Clubs are Organizing for the 2007-2008 4-H Year

While you are a member of your school's 4-H club, you can also participate in project clubs that are a part of our parish 4-H program. Project clubs are groups that conduct all of their activities in one project area. If any of these project area interest you, come be a part of the fun. You'll learn more about the project area, get to participate in 4-H activities outside of your regular school club and make new friends who have the same interests as you do.

4-H Shooting Sports Program

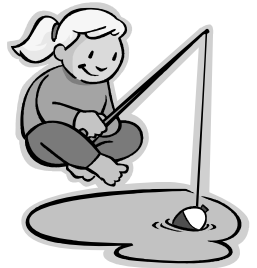
The Shooting Sports club is for members enrolled in the Outdoor Skills project who are interested in learning more about wildlife habitat and management, gun safety, hunting ethics, and much more. The outdoor skills project consists of shotgun, archery, rifle, black powder, pistol and hunting. Volunteers are needed to help teach in the six areas.



The Shooting Sports club meets monthly on Saturdays. This year we will divide into two groups determined by experience level of club members. New members interested in joining **must attend** the first meeting to be held on Monday, October 13 at 6:30 p.m. at the 4-H Office.

4-H Fishing Sports Program

We're really excited about our 3rd year of our 4-H Fishing Sports program. Last year's club toured the LDWF Fish Hatchery, conducted fishing workshops and participated in a fun fishing day. Many more activities are being planned for this year. An initial parent's meeting and enrollment meeting will be held on October 14 at 6:30 at the 4-H Office. Meetings of the Fishing Sports Club will be held throughout the year. If you and your parents are interested in learning about the Fishing Sports program, please complete and return the form found at the end of the Cloverleaf by October 10.



Horse Project Club

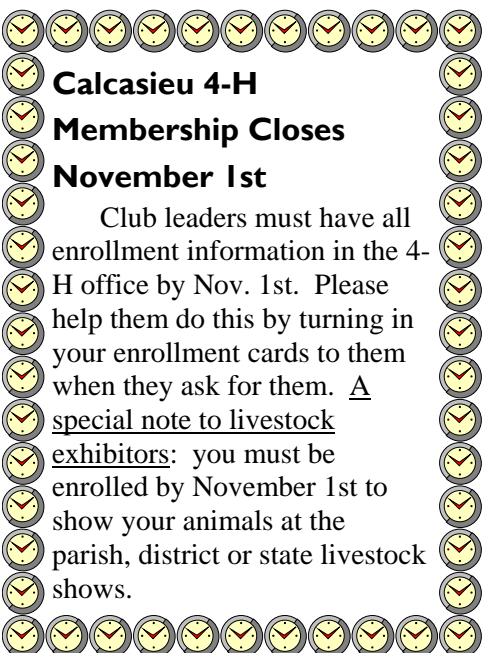
Interested in Horses? Then this is the club for you. All interested 4-H members can participate in this club. You do not have to have a horse to participate, only a strong interest in horses. Some of the activities the club has planned are field trips to veterinary clinics, breeding farms, trail rides and other horse related activities.



The club will meet once a month either on Saturday or after school. To find out more about the Horse Club or to join, please come to our enrollment meeting on **Monday, October 27, 2008 at 6:30 p.m.** at the 4-H Office.

Green TEENs Environmental Club

Are you concerned about what's happening to our environment? Do you want to learn ways that you can help protect our environment. Then our Green TEENs Environmental club is just right for you. We'll be having our first meeting on Monday, October 20 at 6:00 p.m. at the 4-H office. Last year was the first year for our Green TEENs club, and it was full of activities from marking storm drains to planting trees to replace those lost to Hurricane Rita to doing trail maintenance at Sam Houston Jones State Park. On the 20th, we'll brainstorm ideas for this year's projects. We hope to see you there.



Calcasieu 4-H Membership Closes November 1st

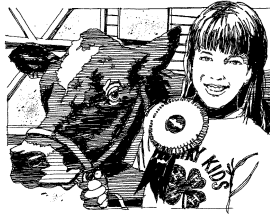
Club leaders must have all enrollment information in the 4-H office by Nov. 1st. Please help them do this by turning in your enrollment cards to them when they ask for them. A special note to livestock exhibitors: you must be enrolled by November 1st to show your animals at the parish, district or state livestock shows.



Livestock News

Livestock Exhibitors! Get Ready For The Spring Shows:

Are you planning to show an animal at the parish, district, or state livestock show? Let us know by filling out the form found at right. Returning this form will put you on the livestock list to receive information from the 4-H office on possession dates, caring for animals, show entry procedures, etc.



Animals to be shown at the parish, district, or LSU shows must be in your possession and under your care before the following dates:

- Steers & Commercial Heifers - September 27, 2008
- Market Lambs & Commercial Ewes - September 27, 2008
- Market Goats & Commercial Does - September 27, 2008
- Market Hogs - December 6, 2008
- Beef Breeding - November 5, 2008
- Dairy - November 5, 2008
- Breeding Sheep - November 5, 2008
- Breeding Goats - November 5, 2008
- Breeding Swine - December 1, 2008
- Meat Pen Rabbits - own does by October 15, 2008, don't breed until after October 18th
- Breeding Rabbits - November 1, 2008

Anyone who plans to show broilers at the parish or LSU show must notify the 4-H office by November 1 so the broiler chicks can be ordered from the hatchery.

Validation of Animals for 2009 Livestock Shows

Market steers, commercial heifers, market lambs, commercial ewes, market goats, and commercial does were validated and classified at regional locations on September 23-27, 2008. Validation for market hogs will be announced at a later date.

Hardship Statement

The district and/or state show manager must be notified within 48 hours of the end of validation if an unforeseen emergency or act of God has prevented an exhibitor from attending validation. After contacting the district and/or state show manager, hardship forms must be immediately filed along with supporting material. The deadline for making notifications and filing hardships is **September 29, 2008, 4:30p.m.** for beef, sheep, and goats and **December 8, 2008, 4:30p.m.** for Market Hogs. These hardships will be evaluated on a case-by-case basis by the parish agent, district show manager and state show manager. Only cases where it is determined that the situation was unavoidable will the exhibitor be allowed to validate. This decision will be final and not subject to appeal. For any approved hardships for animals that require classification, the animals will be classified as crosses.

Livestock Possession Rule Guidelines

If a 4-H or FFA livestock project cannot be housed at the exhibitor's home or family property, the exhibitor must file for a hardship request for special housing. The request must be made and approved prior to possession date. If this request is not made before possession date then the exhibitor will not be allowed to show at the parish, district, and state livestock shows. There will be no exceptions to this rule, so please get your request approved before you purchase show animals this year.

Please contact the 4-H Office if you need to complete this request form and we will mail a copy to you. Forms are also available on our website. Please do not wait until the last minute to get approval, because you will not be able to show. It is the 4-H or FFA member's responsibility to notify the 4-H office of the housing hardship and complete the request prior to possession date for each species.



Spring Livestock Show— Pre-registration—Return by October 22, 2008 to:

Calcasieu Parish 4-H, 7101 Gulf Hwy., Lake Charles, LA 70607

Name _____

Phone _____

School: _____

Grade _____ Age _____

I am planning to exhibit: (put number you plan to show in the blank)

DAIRY: _____

LAMB: _____ Breeding
_____ Market

_____ Commercial Ewe

BEEF: _____ Breeding

_____ Market Steer

_____ Commercial Heifer

HOG: _____ Breeding

_____ Market

GOATS: _____ Breeding

_____ Market

_____ Commercial Doe

RABBITS: _____ Breeding

_____ Meat Pen

POULTRY: _____ Breeding

_____ Broilers

I need help in finding or selecting an animal. YES NO



Magazine Fundraiser

Calcasieu 4-H is trying a new fundraiser this year through American Publishers. **We are not asking you to sell magazines!** Here's how the fundraiser works. American Publishers offers over 700 magazines with many big name titles. These magazines are offered at low discounted prices. For every magazine purchased or renewed through this fundraiser, Calcasieu 4-H will receive 40% profit. It's simple and easy.

To find out more or look over the 700 magazines offered, go to www.aphearst.com. Use the Calcasieu 4-H web code #WC3158. Through the website you can purchase new magazines that you would normally buy at the grocery store, renew a current subscription, and purchase gift subscriptions for your family members, friends or children during the holiday season.

Tell family, friends and relatives about this. They can enjoy reading their favorite magazines while supporting 4-H. It's that easy and Calcasieu 4-H will receive 40% of the sales to support Calcasieu 4-H programs, awards, trip, camps and more! For more information, email or call our office.



Contests

Character Counts Poster Contest - Due November 7th

1. Open to any 4-H club member.
2. Poster must be on 11" x 14" poster board. Posters must not have brand names listed on them or have anything thicker than 1/8" glued to them.
4. All posters receive a ribbon. First and second place winners in each division will receive monetary awards of \$10 and \$5 respectively. The awards will be presented at the end-of-the-year recognition program.
5. All posters must have the contestant's **name, address, grade, 4-H club and school name** on the back in the upper right hand corner. Posters should not be "rolled". Please leave them flat.

Posters should make the public aware of Character Education through the "Character Counts" program. The poster should include at least one or all of the six pillars of character - trustworthiness, respect, responsibility, fairness, caring and citizenship.

Pet Show- October 16th - Burton Coliseum

Registration 6:00 - 6:30 p.m. Show Begins 6:30 p.m.

Each 4-H'er can enter only one pet.

1. Categories of pets include dogs, cats, rabbits, fowl, fish, reptiles, any other. It does not include cows, horses, sheep, pigs, or goats.
2. Elementary and junior members will compete separately in categories where 5 or more pets are registered. In categories where less than 5 pets are registered, elementary and junior 4-H'ers will compete together.
3. In each category, animals will be judged on characteristics such as best groomed, largest (height), smallest (height), most unusual, longest hair, prettiest eyes, etc.
4. This is a "fun" pet show. It is not necessary to have a registered animal. Grooming and cleanliness are important.

Please Note: Categories/characteristics to be judged will vary. We may add or delete categories depending on the number of pets registered.

Beef & Rice Cookery; Egg, Beef & Rice Ambassador Contests - November 1, 2008 - Chalkley Room at Burton Coliseum

These contests would be an excellent way to start off the new year in 4-H. Registration begins at 8:30 a.m.; contests begin at 9:00 a.m. Awards will be presented at 12:00 noon.

First and second place winners in all divisions of all contests will receive an award of \$10 and \$5 respectively to be presented at the end-of-the-year recognition program.

In addition, The first place winners in each category of Beef and Rice Cookery will compete for "sweepstakes" winner of that category. The "sweepstakes" winner in each category will represent Calcasieu Parish at the area contest held in the spring.

All dishes entered in cookery contests must be prepared at home and brought to the contest ready for serving. **Each dish must be chilled on ice and brought to the contest in an ice chest.** No hot dishes will be allowed. Bring only the dish and ice chest to the contest — no placemats, no serving utensils, no flower arrangements, etc.

Rice Cookery Contest

1. Bring prepared rice dish to the contest. The dish must contain at least one (1) cup of cooked rice. Wild rice is not a cultivated rice in Louisiana and does not meet the requirement of 1 cup rice. Dishes containing rice products such as rice cereal, rice flour, etc., must also contain cooked rice.
2. **Two servings of the dish should be exhibited at the contest.**
3. Bring 1 copy of the recipe to the contest. The recipe must contain name of the dish, how much rice it contains, and preparation instructions.
4. Creativity and originality are encouraged. The use of previous winning recipes is discouraged.
5. The contest will be divided into three categories.
Rice Main Dish - contains significant amounts of beef, poultry or seafood.
Rice Side Dish - rice dressing would be considered a side dish.
Rice Dessert



4-H Fishing Sports Club - Return By October 10, 2008 To:

Calcasieu Parish 4-H, 7101 Gulf Hwy.,
Lake Charles, LA 70607

Name: _____

Address: _____

City & Zip: _____

Phone: _____

School: _____

Grade: _____ Age: _____

Parent's
Signature: _____

Elementary Workshop Pre-registration Form -

Return To: Calcasieu 4-H, 7101 Gulf
Hwy., Lake Charles, LA 70607 -
4th & 5th graders only

We will be able to accept a limited number of participants, so be sure to **pre-register by November 7.**

Name: _____

Address _____

Phone _____

School _____

Grade _____

Place a "1" beside the workshop you most want to attend; "2" beside your second choice; "3" beside your 3rd choice; "4" beside your fourth choice and a "5" beside your fifth choice:

- ____ Electricity
- ____ Clothing
- ____ Outdoor Adventures
- ____ Health
- ____ Pet Care
- ____ Foods
- ____ Plants
- ____ Puppetry

Parent's
Signature _____

I plan to attend the parent workshop:
____ Yes ____ No

Beef Cookery

1. Each dish must use a minimum of one pound ground beef.
2. **Two servings of the dish should be exhibited at the contest.**
3. Contestant must furnish a recipe with name, age, and 4-H club. Recipes will not be returned.
4. Creativity and originality are encouraged. The use of previous winning recipes is discouraged.
5. Contestants may enter a total of 2 dishes. Contestant may not enter 2 dishes in the same category. Categories include:

Low Calorie Main Dish - a dish which has less than 300 calories per serving. Calculations of calories must be stated on the recipe. List each ingredient on the recipe and write the number of calories beside each. Then total. Divide the total number of calories by the number of servings.

One Dish Meal - a dish that provides food from at least 3 of the 5 main food groups. The amount is not specified, but it should be enough to provide some nutrients. Use the "My Pyramid" as a guide.

Quick and Easy Main Dish - a dish that takes less than one hour to prepare, including cooking or baking time. Estimation of preparation time must be included on the recipe. List each preparation step separately and write the preparation time beside each step. Total the preparation time.

Egg, Beef & Rice Ambassador Contests (Illustrated Talk)

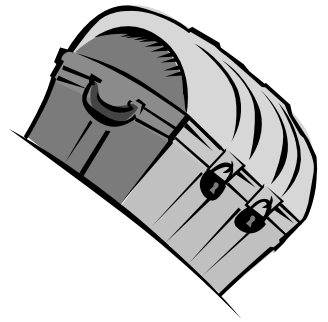
1. **Division I** – (Grades 4-6) Contestant (a) designs a standard poster 22" x 28" relating to one of the five topics concerning Egg, Beef, or Rice (production, food preparation & nutritive value, food safety, processing, marketing), (b) presents a 2-3 minute explanation of poster subject, and (c) responds to questions from judges.

Division II – (Grades 7-9) Contestant (a) designs a standard poster 22" x 28" relating to one of the five topics concerning Egg, Beef or Rice (production, food preparation and nutritive value, food safety, processing, marketing), (b) prepares an essay not to exceed 500 words or 3 typed pages, double spaced, about the selected subject, (c) presents a 2-3 minute explanation of subject, (d) responds to questions from judges.

Division III-(Grades 10-12) Contestant will present a 5-8 minute illustrated talk concerning Egg, Beef or Rice. (Only egg illustrated talk requires a dish.)

Information for illustrated talks can be obtained from the 4-H Office.

2. One table and one easel will be provided.
3. No dish is needed to compete in these contests with the exception of Division III Egg.
4. 1st place winners in each age category will represent Calcasieu at the area contest in March. The Rice Ambassador contest ends at District. Winners from the area contest in Beef and Egg will compete at the State Contest.



4-H

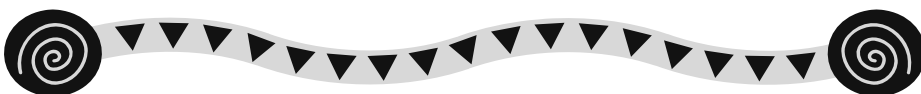
Centennial Scavenger Hunt

A Centennial Scavenger Hunt sponsored by the Louisiana 4-H Foundation will take place through **November 31, 2008** to find photos, medals, trophies, clothing, demonstration materials, record books, 4-H camp memorabilia, etc. for developing exhibits in the Louisiana 4-H Museum.

Items can be loaned or donated to the museum. For more information on how to loan or donate items, contact the 4-H office

Scavenger Hunt Categories

- Most unique item bearing the 4-H emblem AND a parish name
- Oldest item bearing the 4-H emblem
- Oldest 4-H Record Book or 4-H scrapbook
- Oldest 4-H project bulletin
- Photo of 4-H'ers in the act of "learning by doing"
- Photo of 4-H'ers in the act of running a 4-H meeting
- Photo of 4-H'ers actively engaged in a service project
- Photo of 4-H'er doing a demonstration
- Photo of 4-H'er doing public speaking
- Oldest trophy, medal, or certificate
- 4-H "uniforms" worn in the past
- 4-H award trip photo of youth having fun and/or learning
- 4-H award trip memorabilia
- Short Course photo of 4-H'ers
- 4-H University photo of 4-H'ers
- Camp Jesse Harrison photos and memorabilia
- Other camp photos and memorabilia
- Old 4-H demonstration materials, any topic



2008-2009 Club Programs

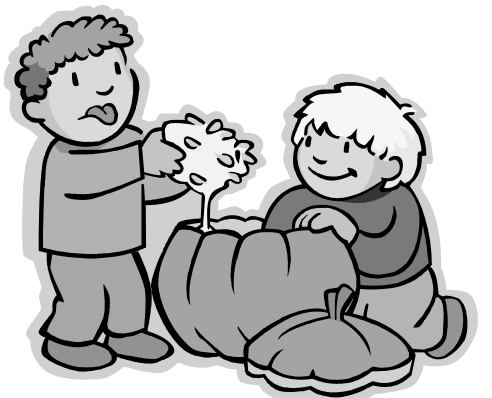
Each year, we select a topic and design club meeting programs around that topic. This year all of our club meeting activities will have to do with safety - sun safety, internet safety, bicycle safety.

This month's safety topic is "Don't Be a Target". Bullying is a big problem that affects lots of kids. Research shows that 80% of adolescents reported being bullied during their school years, 90% of 4th through 8th graders report being victims of bullying and up to 7% of 8th graders stay home at least once a month because of bullies.

What to do if you are being bullied? Try these tips:

1. Don't give the bully a chance. As much as you can, avoid the bully.
2. Stand tall and be brave. Sometimes just acting brave is enough to stop a bully.
3. Get a buddy (and be a buddy). Two is better than one if you're trying to avoid being bullied.
4. Tell an adult. If you are being bullied, it's very important to tell an

Don't Be A Target



**2008-2009
Calcasieu 4-H Activities Calendar**

September

- 9 Jr. Leader Meeting, 7:00 p.m., 4-H Office
- 13 4-H LSU Football Game & Tailgate party
- 26 Livestock Validation for market & commercial animals (beef, sheep, goat) except swine, 10:00 a.m. – 1:00 p.m., Burton Coliseum

October

- 2-5 Southern Regional 4-H Volunteer Conference, Rock Eagle, Georgia
- 5-11 National 4-H Week
- 6 Parish Leader Training, 5 p.m., 4-H Office
- 11 Calcasieu-Cameron Fair Livestock Show, West Cal. Arena, Sulphur
- 13 Officer Training, 4:30 p.m., 4-H Office
- 14 Jr. Leader Meeting, 7:00 p.m., 4-H Office
- 14 Candy Distribution
- 16 Pet Show, Burton Coliseum, Sheep and Swine Arena
- 22-Nov 9 Louisiana State Fair - Elimination Contest for cattle and sheep & swine educational trip, Shreveport, La.

November

- 1 Deadline for Parish 4-H Enrollment
- 1 Deadline for Beef Grazing Project applications
- ? 4-H Livestock Educational Trip for swine, Louisville, KY
- 1 Beef, Egg & Rice Cookery, Burton Coliseum, Chalkley Room
- ? 4-H Livestock Educational Trip for beef and sheep, Louisville, KY
- 7 Character Counts Poster Contest due, 4-H Office
- 11 Jr. Leader Meeting, 7:00 p.m., 4-H Office
- 15 Elementary Project Workshop Day, 8:30 a.m., Gayle Hall
- 24 Junior & Senior Workshops, 7:30 a.m. - 5:00 p.m., 4-H Office
- 25 Calcasieu-Cameron Livestock Showmanship Clinic, 9:00 a.m., Burton Coliseum
- 25 Livestock Judging (Beef, Swine, Poultry, Dairy, Horse,) & Meats ID Contests, 12:30 p.m., Burton Coliseum
- 28-Dec 2 National 4-H Congress Trip, Atlanta, GA

December

- 3 Pre-registration for Demonstration Day
- 5 Parish, District Livestock Entries Due
- 6 Demonstration Day, 8:30 a.m., 4-H Office
- 9 Jr. Leader Meeting, 7:00 p.m., 4-H Office
- 15 Start Junior Beef Grazing Project
- 24-Jan 2 Holidays

January

- 7 Pre-registration for all Clothing Contests
- 8 Jr. Leader Meeting, 7:00 p.m., 4-H Office
- 9 Key Club, Award of Excellence Applications due in 4-H Office
- 10 Clothing Contests, Consumer Decision Making, Photography, Seafood, Poultry & Sugar Contests, 8:30 a.m., Gayle Hall
- 22-24 Parish Jr. Livestock Show
- 24-25 4-H Fashion Camp, Camp Grant Walker
- 31 Parish Jr. Livestock Sale

February

- 1-7 Southwest District Livestock Show
- 12 Jr. Leader Meeting, 7:00 p.m., 4-H Office
- 14-21 LSU State Livestock Show
- 14-15 Food and Fitness Camp, Camp Grant Walker
- 21 Pre-registration for Public Speaking
- 28 Public Speaking, Personal Development, Food Exhibits & Interviews, Dog Care, Plant I.D., Insect, Wildlife, Consumer Foods Judging Contests, 8:30 a.m., Gayle Hall
- TBA Rural Electric Youth Tour applications due
- TBA Southern Livestock, Poultry & Market Goat Show

March

- 6 National 4-H Conference applications, LSU
- 6 Jr. Wildlife Tour records due, LSU
- 6-8 Area 4 Challenge Camp
- 12 Jr. Leader Meeting, 7:00 p.m., 4-H Office
- 13 4-H Scholarship applications due
- 13-15 State 4-H Leadership Conference, Camp Grant Walker
- 15 Citizenship Washington Focus Application, LSU
- TBA Co-Op Youth Camp application due, LSU
- 23 Record Books due in 4-H Office
- 28-29 Southwest Louisiana Garden Festival, Burton Coliseum
- TBA Area Cookery Contests, Crowley, LA

April

- 1-7 Leap tests - statewide
- 2 Outstanding Individual 4-H'ers & 4-H Club Forms due in Office
- 3-5 Co-Op Leadership Conference, Camp Grant Walker
- 9 Jr. Leader Meeting, 6:30 p.m., 4-H Office
- 12-17 Jr. Leader trip to Washington, D.C.
- 15-16 SW LA Horse Camp
- 20 Calcasieu 4-H Awards Night, Burton Coliseum-Chalkley Room
- 21 State Ambassador Cookery Contests, Baton Rouge, LA
- 23 4-H U Selection meeting, 7:00 p.m., 4-H Office
- 27 Calcasieu Volunteer Leader Banquet, Burton Coliseum

May

- TBA 4-H Outdoor Skills Shooting Sports State Competition
- 1-15 Close 4-H Rye-grass Grazing Projects
- 4 Organizational Leader Reports & Financial Summaries due
- 4 Club CRD Books due in 4-H Office
- 11 4-H Advisory Committee Meeting, 6:30 p.m., 4-H Office
- 15 Applications for State Boards (citizenship, food & fitness, fashion, SET) & State Office

June

- TBA 4-H Day at the Capitol
- 3 Short Course Records, Clothing Garments Due
- 13 Calcasieu Parish Horse Show, West-Cal Arena, Sulphur
- TBA Rural Electric Youth Tour, Washington, D.C.
- 23-26 4-H University, LSU
- 29-30 Southwest District Horse Show, West-Cal Arena

July

- TBA State Horse Show, LSU
- 15 State Records due, LSU
- TBA Educational Trip to Orlando, FL
- TBA Citizenship Washington Focus Trip, Washington, D.C.
- TBA Calcasieu-Cameron Marsh Maneuvers
- 29-31 Citizenship Louisiana Focus, Baton Rouge

August

- TBA Southern Regional 4-H Horse Show
- TBA Fashion & Food & Fitness Board Trip
- TBA Junior Wildlife Tour, Lumcon Camp, Port Fuchon