



THE LAFAYETTE PARISH 4-H BARNYARD SCOOP



Lafayette Parish
 1010 Lafayette St., Ste 325
 Lafayette, La. 70501-6884

Phone: 337-291-7090
 Fax: 337-291-7099
 Visit our Web site:
www.lsuagcenter.com

February 2009
 Volume 12, No. 4

Introduction

A number of 4-H and FFA animals that participated in the District Show qualified to attend the LSU State Junior Livestock Show in Gonzales on **February 14-21**.

If you were one of those that **did** qualify for the State Show, then the items listed under "State Show Arrival Information" later in this letter are important for you. However, before getting to that, there is information on **animals sold in our sale** which all market animal exhibitors must be aware of.

Our parish show photographer, Mrs. Beverly Vincent will be posting photo's soon at: www.beverlyvincent.smugmug.com/4H.



Inside this issue:

Lessons That Last a Lifetime	2
State Show Arrival Information	2
Teamwork is Important!!	3
Exhibition Poultry/ Broilers	3
School Excuses	3
Record Books Due	3
Livestock Advisory Committee Mtg.	4
General Information	4
Ag Magic	5
Agent News	5

The Lamar Dixon Expo Center

The LSU AgCenter Livestock Show will be held at the Lamar Dixon Expo Center. More information including a map of the facility can be found at www.lamardixonexpocenter.com. Or, you may call them at: (225)621-1700.

Gonzales is a growing city and highlights include Cabela's and the Tanger Outlet Mall. For more information about the city including a listing of hotels, go to www.gonzalesla.com.

Animal Sale Information



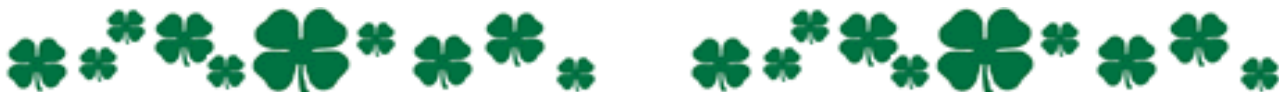
You will soon be receiving a packet that has Sale pictures, buyer's card(s), and a letter from us explaining how to handle delivery of their animals, pictures and thank you notes. If you are not attending the State Show, pick up your packet during the week following the show state.

Exhibitors must send a photocopy of their thank you letter/note to the 4-H office. An exhibitor's check will be released when the buyer pays, and the photocopy of the thank you note has been received. Send the photocopy to Angie Arnold, Sale Thank You, 1010 Lafayette St., Ste. 325, Lafayette, LA 70501. The checks will start being issued at the Barnyard Bash in early May.

The instructions on the above mentioned letter must be followed. Remember, checks will be issued to exhibitors only **after** thank you notes **and** pictures have been "hand delivered" to buyers. Please contact Ms. Angie to let her know that you have delivered your pictures and thank you notes.

Parish Group Planning

Be sure to pack your parish show team shirts to wear during the parish group competitions. *Swine exhibitors*, don't forget your blue "**Piggin' Out**" shirts for market hog parish group on Thursday evening.



Lessons That Last a Lifetime

One purpose of the 4-H livestock projects is to teach young people how to feed, fit, and show their animals. The more important purpose is to provide an opportunity for personal growth and development of the young person.

The WIN-AT-ALL-COST attitude sometimes results in practices that have no place in livestock production or at our youth livestock shows. When these things begin to occur, we lose sight of the program. Just as a reminder, the 4-H Livestock Shows are an avenue to develop our youth through the use of a tool (the animal).

The **Character Counts!** program is based on the "Six Pillars of Character" and those are **RESPECT, RESPONSIBILITY, TRUSTWORTHINESS, FAIRNESS, CARING AND CITIZENSHIP.**

TRUSTWORTHINESS: honesty, promise-keeping, loyalty.

RESPECT: courtesy, proper treatment of people, animals, things.

RESPONSIBILITY: pursuit of excellence, accountability, perseverance.

FAIRNESS: consistently applying rules and standards appropriate for different age groups and ability levels.

CARING: promoting the well-being of people and things in a young person's world, taking action, not just feeling

CITIZENSHIP: making the home, community, and country a better place to live for all

The 4-H Office offers workshops throughout the year to help prepare 4-H members for the premier exhibitor contests as well as to teach them about the 6 Pillars of Character.

The next meeting will focus on horse premier exhibitor and will be held at the 4-H office on **Monday, March 3rd, from 5:15-6:45 PM** (supper provided after session).

Your buckles tarnish and scratch,
the color of your ribbons will fade,
your prize money will be spent,
but the lessons learned
through the livestock project
will last a lifetime!



State Show Arrival Information

Before the end of the District Show, each exhibitor was asked to inform us of exactly how many animals would be attending the State Show. Contact us immediately if any of these plans have changed.

All livestock and poultry will **enter** the show grounds through Lamar Dixon Expo's rear entrance on **ASHLAND RD.** The animals will be released as a general rule at the conclusion of the shows on that given day. This will be publicized by the show management.

Exhibitors will pay their entry fees by specie only, at the LSU AgCenter State Livestock Show when they pick up their weigh card for market animals and/or their exhibitor number for breeding animals. There will be signs and tables set up to take entry fees and issue cards and numbers. This will also serve as a check in for the show.

Every family should already have printed a copy LSU Livestock Show Catalog which contains all rules and regulations and a schedule of events for the State Show. Please note the "split" show schedule for sheep and swine. In addition, a "split" show schedule will also be used for steers, dairy, and beef breeding animals.

Scheduled Arrival Times

- **Sheep** must arrive by Saturday, 2/14 beginning at 7:00 and before 3:00 PM.
- **Exhibition poultry** must arrive by 2:00 PM on Saturday, 2/14
- **Long haired cattle (or British and European breeds and Simbrah), steers and commercial heifers** must arrive between Saturday, 2/14, starting at 8:00 AM through midnight and can continue to arrive on Sunday 2/15, at 8:00 AM & before 3:00 PM.
- **Goats** must arrive by Sunday, 2/15 beginning at 8:00 A.M. and before 5:00 PM.
- **Broilers** must arrive by Tuesday, 2/17, between 9:00 AM and 2:00 PM.
- **Hogs** may not arrive until Wednesday, 2/18, beginning at 6:00 AM and Breeding swine must arrive by 2:00 PM. All market swine must arrive by 4:00 PM.
- **Short haired cattle (or Brahman Influenced)** must arrive on Wednesday, 2/18, between 6:00 AM and before 3:00 PM.
- **Dairy** may arrive Thursday, 2/19, beginning at 7:00 AM through 2:00 PM.

Teamwork is Important!!

Over the last several years, we have begun making great strides in utilizing more volunteers in our program. Our program will continue to demand more volunteers. In addition, specie representatives and parents will assist/coordinate some of the exhibit and clean aisle while at the state show. This will include beef parish groups during both splits of the show.

Pen spaces will be assigned by the agents with the help of specie representatives. As of now, to our best knowledge, the show office is anticipating the same number of animals as last year, with allowing blue market animals to participate at state. If that is the case we will house two (2) animals per pen. There is always a possibility that we could have three (3) animals per pen. We ask that you come prepared to handle this assignment with any alterations, dividers, etc., that you may want to use. Again, this could change between now and the time we arrive, but be aware. We will be as fair as possible to everyone when assigning pens based on the total number of pens allocated to our parish.

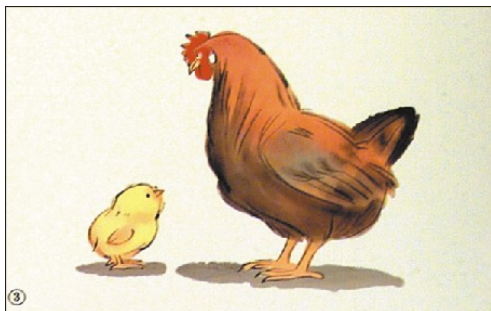
All exhibitors attending the State Show are responsible for feeding, watering and caring for their animals, as well as for cleaning of the area where their animals are tied, stalled, etc. **This must be done each morning prior to 8:00 AM.** The Clean Aisle Contest will be conducted for each specie at the State Show. Parents, we would expect your help in getting our exhibitors to keep their areas clean and to clean the aisles. Let's demonstrate our pride and **TEAMWORK** to the entire state. We need everyone's help to continue Lafayette's trend of excellence in this area.

Exhibitors are also responsible for getting their animals to the scale, turning in weight cards, and getting your animal to the show ring in a timely manner. Parents must help by constantly reminding their children of these responsibilities.

Exhibition Poultry/Broilers

Poultry exhibitors need an LSU leg band on their birds in order to show. These were mailed prior to the parish show. If you need additional leg bands, call Mrs. Angie at 291-7090. Also, **MAKE SURE YOU KNOW WHAT YOU ENTERED. You are only allowed to show what you entered.**

Exhibition poultry must have a health certificate from a vet in addition to the VS-Form 9 (pullorum typhoid test). Broilers must have a general health certificate form, but the v-s form isn't required for broilers.



School Excuses

School excuses have been sent out for the State Live-stock Show. A copy of the excuse letter was faxed to each school as well as a copy sent to both the principal and 4-H organizational leader at the school. These excuses serve as verification only.

It is the responsibility of the parent and the child to clear show absences and make up the work with teachers and principals before the days are missed or in a timely manner. Also, if a child is excused but does not need to miss school on a given day, they should report to school, if at all possible. These excuses were sent to appropriate principals and 4-H leaders this week. The days that each member was excused are as follows:

Broiler Exhibitors – Tuesday - Wednesday

Cattle Exhibitors – Monday-Tuesday and/or Wednesday-Friday

Dairy Exhibitors – Thursday - Friday

Goat Exhibitors – Monday & Tuesday

Exhibition Poultry – None

Poultry Premier Exhibitor—Monday

Sheep Exhibitors – None

Swine Exhibitors – Wednesday - Friday

Commercial Heifers - Monday

Record Books Due

How are those Record Books coming along? By now they should be close to completion. Here are a few things to remember:

All records are due February 27. Many of you have been very busy doing the work that should be recorded in your project books.

The contests you entered and the awards that you have won over the last three years can all be recorded in your project books. List in detail the work you did and the things you learned. 7-12 graders – Don't forget to put the record sheets from the portfolio along with the project book.

These forms and instructions can all be found on the website under contest rules and forms. You can access it At the following address:

http://www.lsuagcenter.com/en/our_offices/parishes/Lafayette/Features/4-H/Contest_Rules+/

4th Graders – Complete your entire booklet.

5-6 graders – Put the entire project book behind **Section 2**; and complete the members record forms.

7-9th Graders—Complete the designated activities in the book along with the portfolio.

Good luck and congratulations with your achievements!

Livestock Advisory Committee Meeting

Advisory Committees are the key to a successful program. The primary purpose of the committee is to give the stakeholders the opportunity to express their views on the needs of their community and how Extension can best meet those needs. The committee's overall purpose is to advise and make recommendations to the Extension Staff to improve the parish program. Furthermore, the committee should assume more responsibility in assisting the Extension personnel in planning, executing and evaluating programs.

The committee members gain and grow from the experience, as-well-as gain support for the Extension program in the community. In addition, they have to be willing to invest their time and have the capability to work and communicate with others.

There will be an important meeting on **February 26th starting at 6:00 PM** at the 4-H office. At this meeting, *recommendations* for the parish, district and state shows will be presented and discussed. If you would like to present a recommendation, contact one of your specie representatives listed below.

CATTLE

Specie Representatives

Tommy Clark - 873-3300
Tracey Deville—322-6459

Youth Representatives

Niki Dutile
Dru Broussard

POULTRY

Specie Representative

Shawn Daspit—896-3990
Mark Simon—856-0146

Youth Representative

Karl Simon
Bailey Snyder

SWINE

Specie Representative

Joel Guidry— 896-7264
Harold Green—332-4195

Youth Representatives

Cole Guidry
Ashley Johnson

GOAT

Specie Representatives

Tammy Richard—344-1410
Leah Guidry—873-9747

Youth Representatives

Valerie Guidry
Jade Daspit

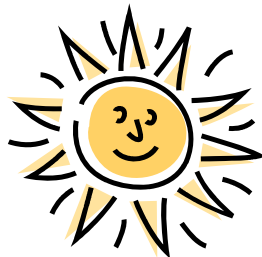
SHEEP

Specie Representative

Amber Latiolais - 896-9211

Youth Representatives

Quintin Trahan
Chelsea Trahan



General Information

Exhibitors and parents are responsible for making arrangements for getting animals and exhibitors to and from Gonzales. If you are interested in group transportation, call one of us and we will let you know who else from your area will be going to the State Show.

All 4-H and FFA exhibitors attending the State Show, no matter the age of the exhibitor, must have **ADULT** supervision. We will assume this to be parents. Any exhibitor who does not have parental supervision must have another adult responsible for the exhibitor while in Gonzales.

Parents are expected to notify this office at 291-7090 before the State Show, if they will not be present and another adult will be responsible for their child. Agents and AG teachers will not be responsible for chaperoning of exhibitors.

All rules pertaining to conduct, behavior, etc. that apply to other 4-H and FFA functions also apply at livestock shows. **Alcohol consumption by exhibitors is prohibited. Any exhibitor caught violating this rule or other rules pertaining to conduct, behavior, etc. will be dealt with accordingly at his/her respective school.**

The bulk of all clipping and shearing work on all animals should be done prior to your departure for Gonzales. This is your responsibility. Clipping of hogs on the state show grounds is prohibited. Sheep and goat grooming tables as well as cattle grooming shoots must be registered at the Show Office.

Beef exhibitors will need to place their tack on the exterior portions (outside) of the cattle bay areas. Tie space will not be given to accommodate for tack in the bays.

State Showmanship Sign-Up: Most species are requiring that you sign up for showmanship. Please be sure to do this if it is required. Refer to the LSU Catalog for times to sign-up which normally takes place upon arrival during registration.



. The event code is 4-H.

Ag Magic

A continuation of the total remake of the successful 4-H Mini Farm is planned for April 20-24, 2009, at the John M. Parker Coliseum. The event is called **Ag Magic**. This is an opportunity for individuals, families, and schools to experience the benefits of real world agriculture.

With the state livestock show moving to the Lamar Dixon facility, the AgCenter felt it was time to make-over and enhance the agricultural experience for children and adults. "**Ag Magic** will take children and adults through a journey of Louisiana agriculture and economically beneficial commodities they use every day," says Dr. Paul Coreil, director and Vice Chancellor.

Ag Magic will be open Monday, April 20, thru Friday, April 24, from 8:00 AM until 1:00 PM. The first week will focus on Pre-K thru 2nd grade. Week two will focus on older grades. **Ag Magic** will be open to the public Saturday, April 25 and Sunday, April 26 from 10:00 AM – 5:00 PM.

In the past, organized school groups and clubs have visited the 4-H Mini Farm to view and pet farm animals. The **Ag Magic** experience will create a more interactive visually stimulating environment that will link food and fiber products we use every day to the originating forests, field crops and livestock produced by Louisiana farmers, ranchers and forest landowners statewide. Plans are to construct a forest within the coliseum and exhibit forest products, as well as provide natural settings for wildlife and farm animals. Featured crops will be displayed in various stages of development and the importance of interaction between agriculture and the environment and society at large will be highlighted.

Mark your calendars and join us at **Ag Magic** for this truly one of a kind event. For more information go to <http://www.lsuagcenter.com/subjects/agmagic/index.asp>. If you have questions, please contact us at 291-7090.



Agent News

The agents' plans for the state show are as follows: **Beef and Dairy Exhibitors** - Ms. Nikki will arrive in Gonzales early Saturday, February 14 and remain thru Tuesday, return on Wednesday and stay through Saturday evening. Mr. Charles will also be coming on Wednesday, February 18th to work beef registration.

Swine Exhibitors - Mrs. Angie will be arriving at the show on Wednesday, February 18 and stay through Saturday afternoon.

Sheep, Goat & Poultry Exhibitors - Mrs. Nikki will be arriving at the state show on Saturday, February 14th. She will remain until Tuesday evening.

Sincerely,

Angie Arnould

Angie Arnould
County Agent
4-H Youth Development
Lafayette Parish

Nikki Mouch

Nikki Mouch
Assistant 4-H Agent
4-H Youth Development
Lafayette Parish

CHARLES HEBERT

Charles Hebert
County Agent
4-H Youth Development
Lafayette parish



Please Note:

It is the policy of the LSU AgCenter, Louisiana Cooperative Extension Service that no person shall be subjected to discrimination on the grounds of race, color, national origin, gender, religion or disability. If you have a disability which requires special attention for your participation in any aforementioned activity, please contact the Lafayette Parish Office at 291-7090.